



COVID-19 Update

[#KeepKidsLearning](#)



UNITING TALENT & PASSION

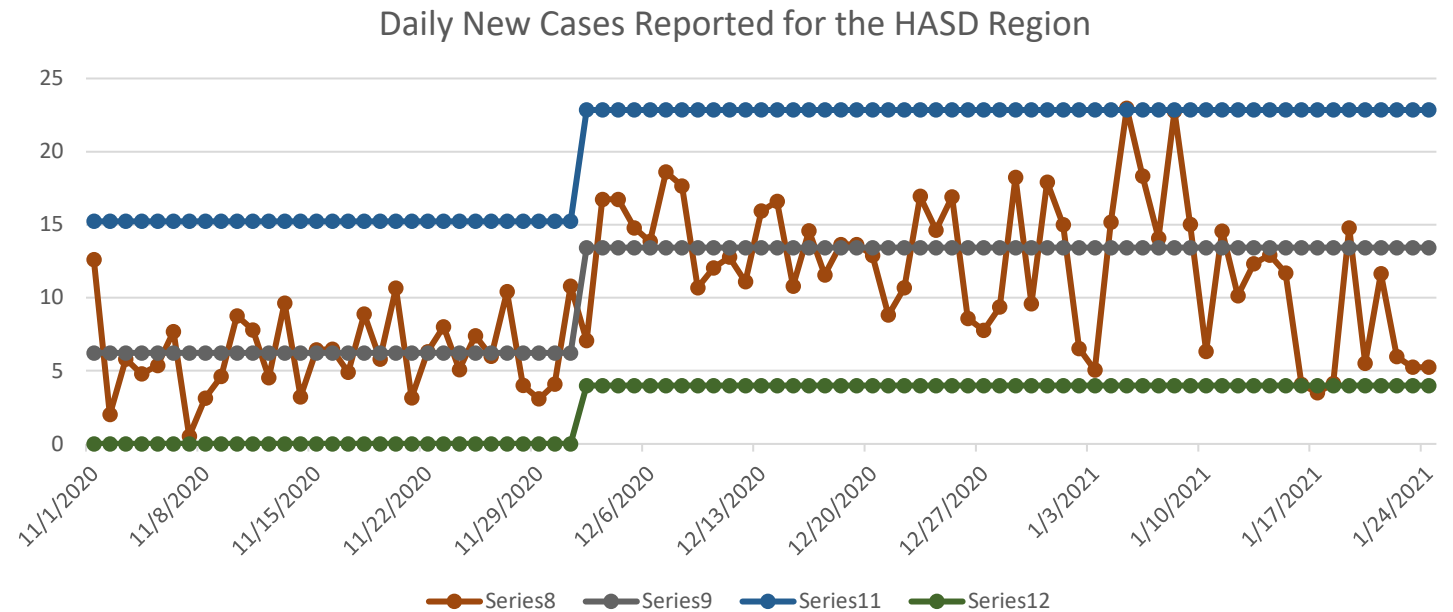


**Every
Child
Without
Exception**



Daily Cases Reported in the Region

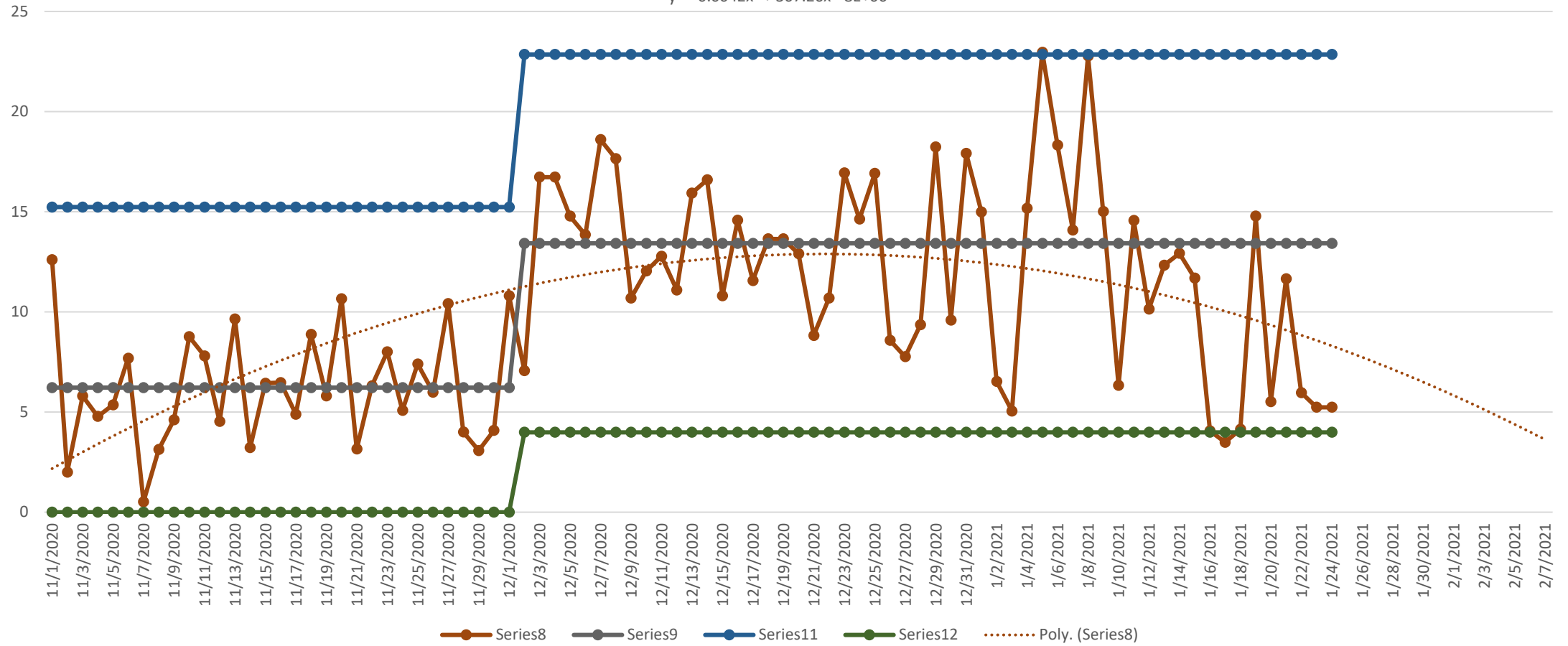
- The large number of cases that corresponded to the new Year's Holiday was followed by seven consecutive days below the average. One of these days fell below the lower control limit.
- Both of these situations show that there is a loss of control within the "system". This is good because the data is verifying a statistically significant negative trend.
- New trend lines and control limits will be calculated at the end of January as guides for the remaining months of the winter.



Simple Forecast

Polynomial Modeling

$$y = -0.0042x^2 + 367.26x - 8E+06$$



As of 1/25/21
#KeepKidsLearning

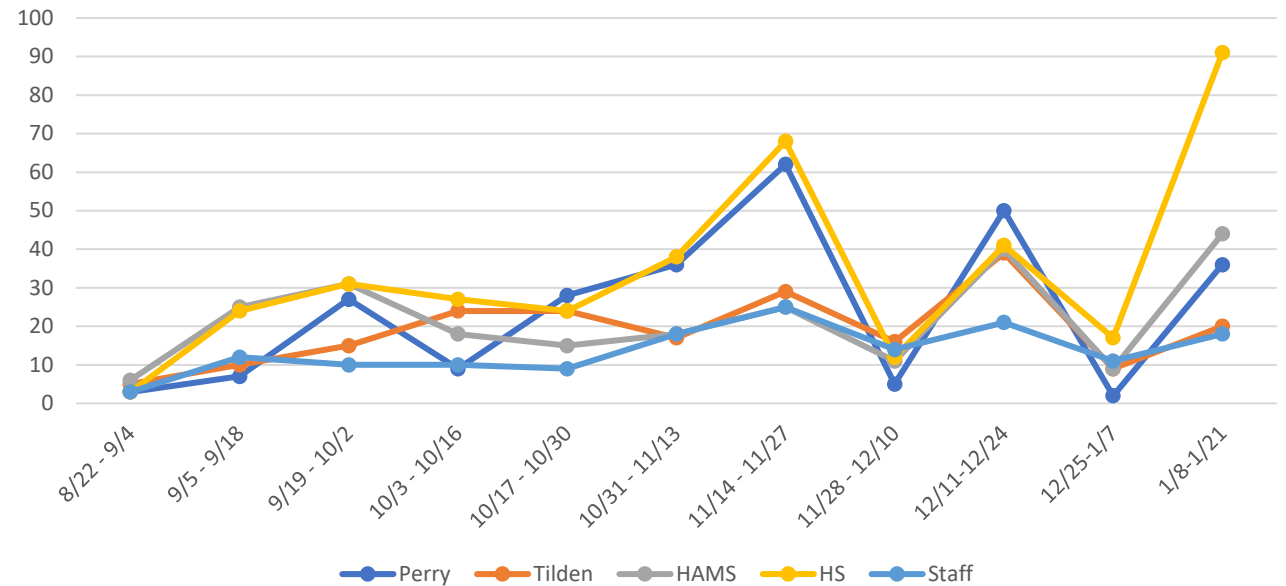
HASD daily attendance rates

		Jan. 11	Jan. 12	Jan. 13	Jan. 14	Jan. 15	Jan. 19	Jan. 20	Jan. 21	Jan. 22	Jan. 25
HS	901 Total	77	87	94	68	84	92	82	117	101	0
	%	88.7%	87.2%	86.2%	90.0%	87.7%	86.5%	88.0%	82.8%	85.2%	100.0%
MS	902 Total	28	32	32	26	29	35	72	58	62	0
	%	94.3%	93.5%	93.5%	94.7%	94.1%	92.9%	85.3%	88.2%	87.4%	100.0%
Perry	904 Total	24	15	18	17	18	36	35	36	34	0
	%	92.8%	95.5%	94.6%	94.9%	94.6%	89.2%	89.5%	89.2%	89.8%	100.0%
Tilden	906 Total	33	29	42	38	52	34	42	47	32	0
	%	93.6%	94.4%	91.9%	92.7%	90.0%	93.4%	91.9%	90.9%	93.8%	100.0%
Total All Buildings		162	163	186	149	183	197	231	258	229	0
%		92.0%	91.9%	90.8%	92.6%	90.9%	90.3%	88.6%	87.2%	88.7%	100.0%
Total Employees		26	19	23	21	31	20	18	18	22	0
%		92%	94%	93%	93%	90%	94%	94%	94%	93%	100%
						1/2 day	Secondary Virtual				
Students required to quarantine are included in the overall numbers for absences											

Contact Tracing

- 209 cases tracked over the most recent 14-day period
- Most people report having symptoms 48 hours after the last contact with the school population
 - They were not in school at least 2 days prior to having symptoms.
 - They were already quarantine due to being in close contact with a positive case
- 26 positive cases were reported for staff and students throughout the district.

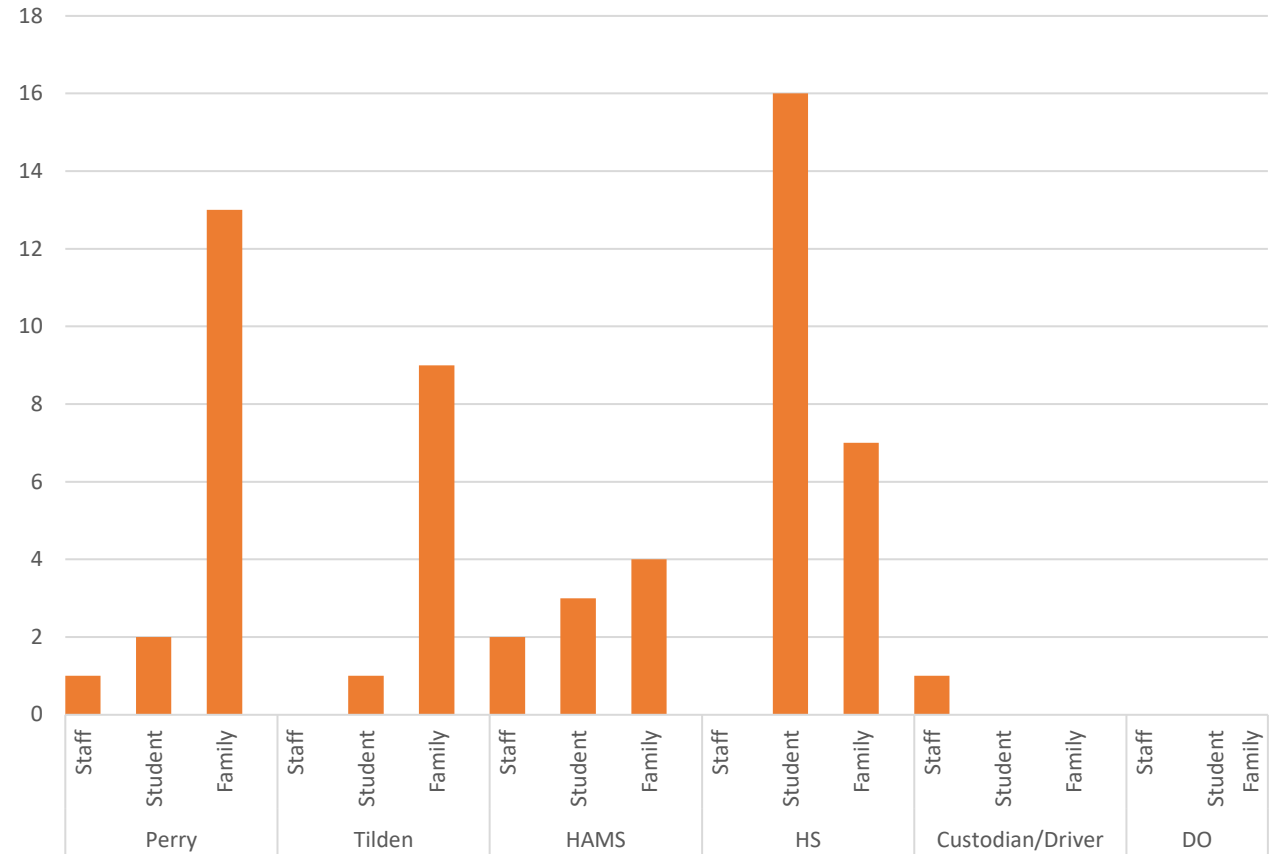
HASD Quarantined/Possible/Confirmed Cases



Positive Cases Breakdown

- Department of Health guidance to reduce live learning
 - ≥ 2 cases **within the building** for buildings with less than 500 people (Perry)
 - ≥ 4 cases **within the building** for buildings with greater than 500 people (Tilden, Middle School, High School)
- Known Positive since January 15
 - Perry Elementary – 3
 - Tilden Elementary – 2
 - Middle School – 6
 - High School – 6
- Bulk of High School positive cases are HAVA students.

Known Positive Cases
1/8 - 1/21



KEY CDC mitigation strategies

- 5 key mitigation strategies: PLUS 1
- **Do not come to work/school if sick or close contact with a positive case.**
 - **Consistent and correct use of masks**
 - **Social distancing to the largest extent possible**
 - **Hand hygiene and respiratory etiquette**
 - **Cleaning and disinfection**
 - **Contact tracing in collaboration with local health department – The graph demonstrates the detailed ability of HASD to track current C19 situations**